

**This electronic collection of documents is provided  
for the convenience of the user  
and is Not a Certified Document –**

**The documents contained herein were originally issued  
and sealed by the individuals whose names and license  
numbers appear on each page, on the dates appearing  
with their signature on that page.**

**This file or an individual page  
shall not be considered a certified document.**

STATE OF NORTH CAROLINA  
DIVISION OF HIGHWAYS

|                     |                |
|---------------------|----------------|
| PROJ. REFERENCE NO. | SHEET NO.      |
| B-6023              | X-1A           |
| HENDERSON COUNTY    | BRIDGE #440192 |

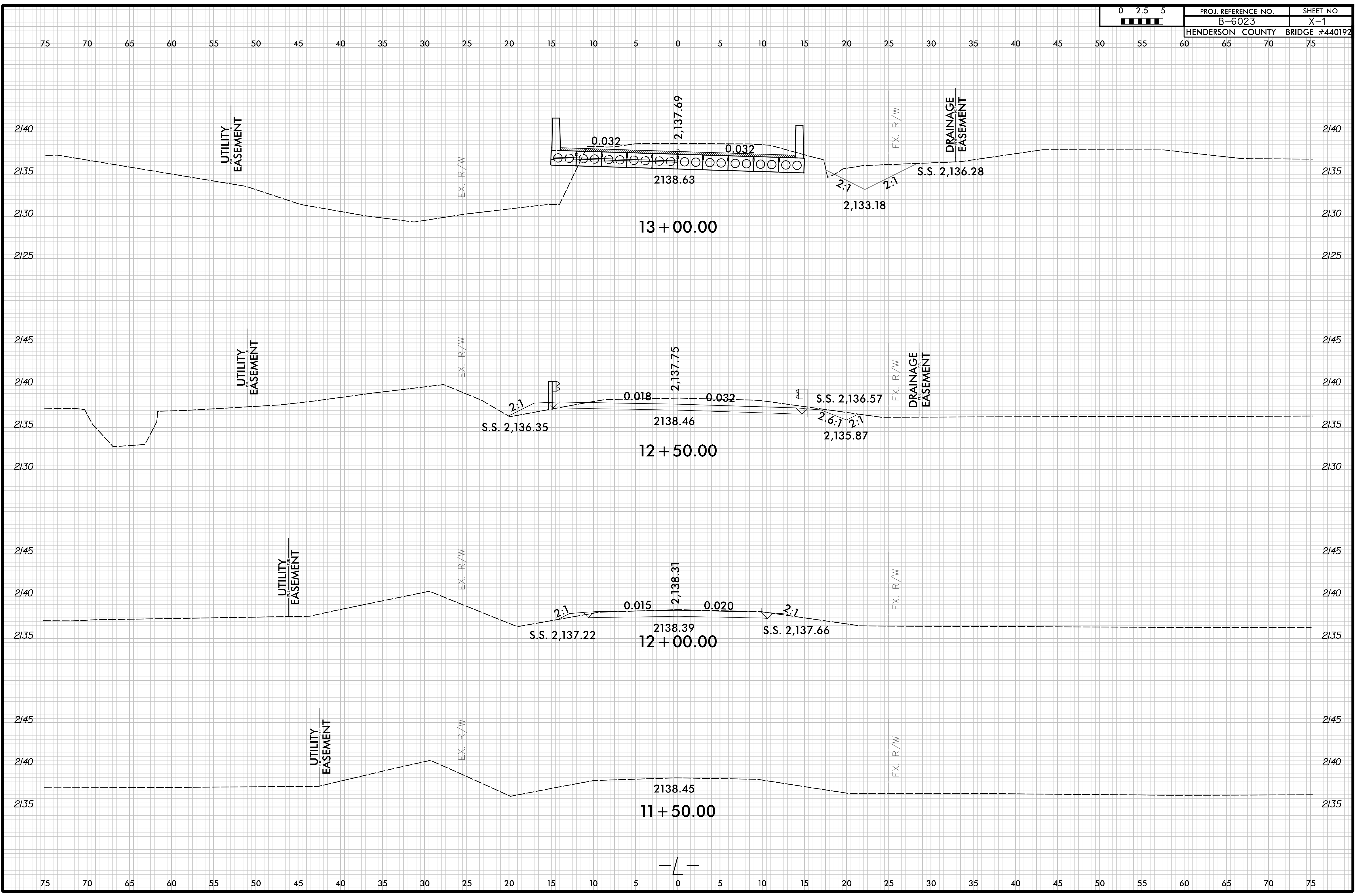
| <b><i>INDEX OF SHEETS</i></b> |   |
|-------------------------------|---|
| SHEET NUMBER                  | SHEET                                       |
| X-1A                          | INDEX OF SHEETS & SUMMARY OF CROSS SECTIONS |
| X-1 THRU X-2                  | -L- CROSS-SECTIONS                          |

***SUMMARY OF CROSS SECTIONS***

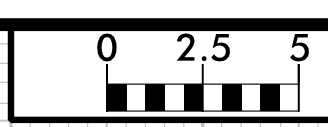
| LOCATION            | UNCLASSIFIED EXCAVATION (Cubic Yard) | *EMBANK. +15% (Cubic Yard) |
|---------------------|--------------------------------------|----------------------------|
| -L- STA. 12 + 00.00 | 9                                    | 1                          |
| -L- STA. 12 + 50.00 | 47                                   | 5                          |
| -L- STA. 13 + 00.00 | 43                                   | 5                          |
| -L- STA. 13 + 50.00 | 7                                    | 1                          |
| -L- STA. 14 + 00.00 | 45                                   | 12                         |
| -L- STA. 14 + 50.00 | 32                                   | 6                          |
|                     |                                      |                            |
|                     |                                      |                            |
|                     |                                      |                            |

\*NOTE: EMBANKMENT COLUMN INCLUDES BACKFILL FOR UNDERCUT

Approximate quantities only. Unclassified Excavation, Borrow Excavation, Shoulder Borrow, Fine Grading, Clearing and Grubbing, Breaking of Existing Pavement, and Removal of Existing Pavement will be paid for at the contract lump sum price for "Grading".

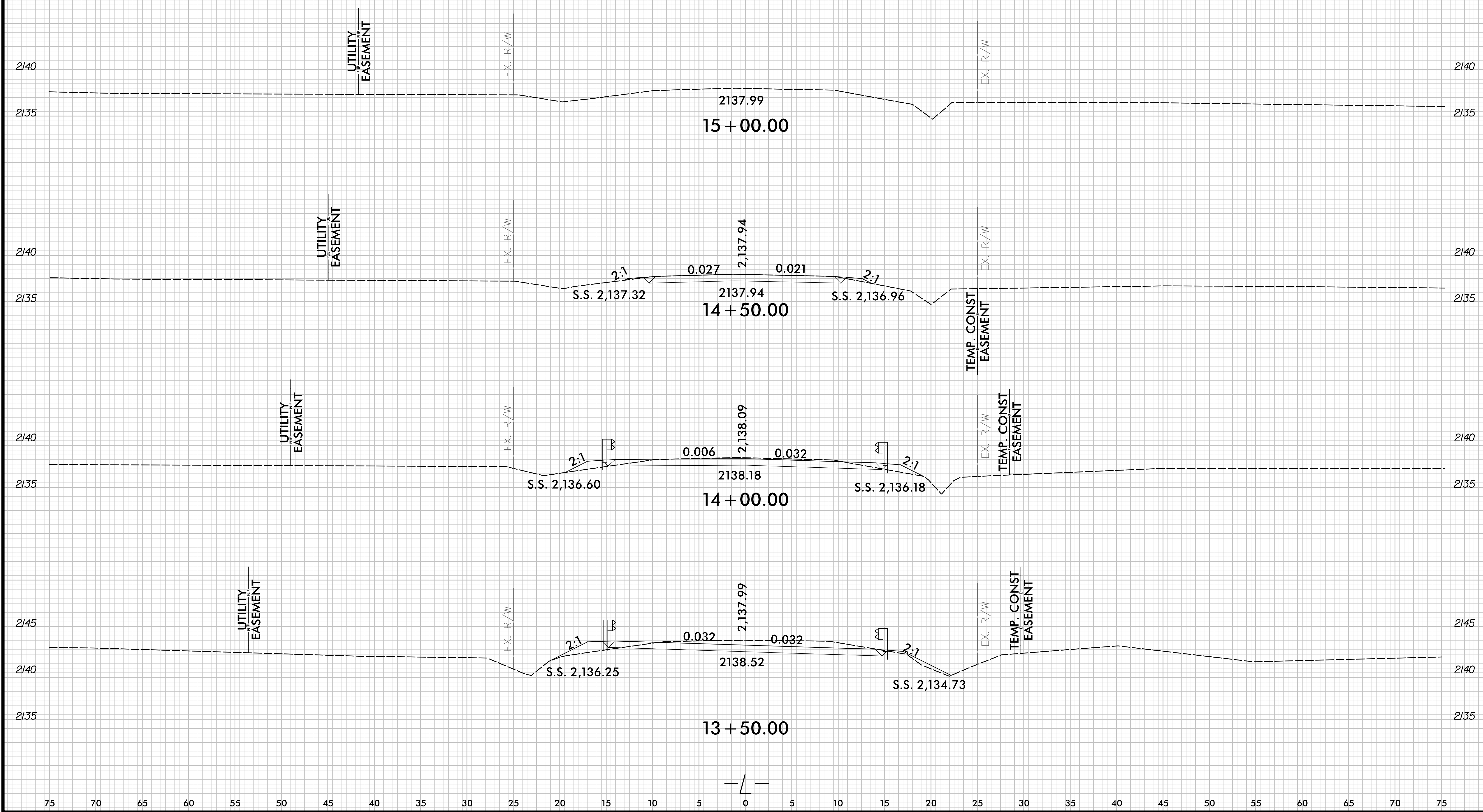


8/23/99



|                     |                |
|---------------------|----------------|
| PROJ. REFERENCE NO. | SHEET NO.      |
| B-6023              | X-2            |
| HENDERSON COUNTY    | BRIDGE #440192 |

75 70 65 60 55 50 45 40 35 30 25 20 15 10 5 0 5 10 15 20 25 30 35 40 45 50 55 60 65 70 75



75 70 65 60 55 50 45 40 35 30 25 20 15 10 5 0 5 10 15 20 25 30 35 40 45 50 55 60 65 70 75